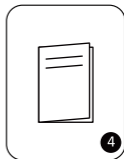
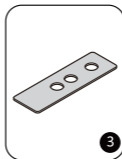
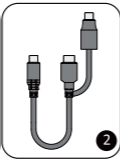
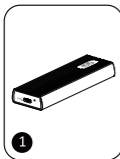


Technical data

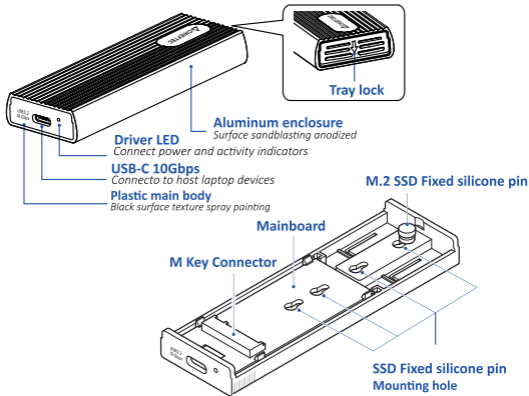
- Model: CEB-M2C-TL
- Dimension (mm): 104.3 x 36.3 x 13.4
- Weight: 70g
- Compatible SSD Type & Dimensions:
 - M.2 PCI-E NVME SSD (M & B+M Key) 2230/2242/2260/2280
 - M.2 SATA SSD (B+M Key) 2230/2242/2260/2280
- USB Interface(ext.): USB 3.2 Gen2 Type-C
- Data transfer rate: Up to 10 GBit/s (USB 3.2 Gen2)
- Power: via Type-C Data Cable
- Operating temperature: 5°C ~55°C
- Operating System: Mac OS X 10.14.4 and future releases.
Windows XP, 7 SP1 32 and 64 bit, Windows 8/8.1 32 and 64 bit,
Windows 10 32 and 64bit and future releases.

Package Contents



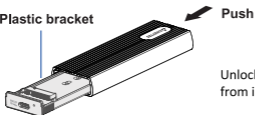
1. SSD Enclosure
2. USB 3.2 Gen.2 Type-C to Type-A Cable + A to C adapter
3. Thermal pad
4. Manual

Product Diagram



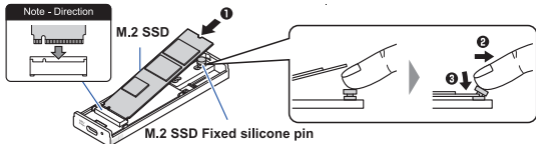
Installation Guide

Plastic bracket



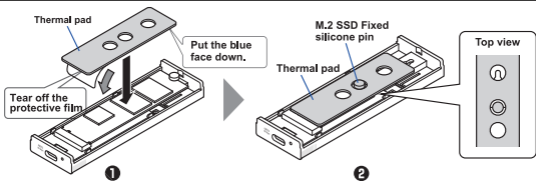
Unlock the tray and remove the main bracket from inside the Enclosures.

Note - Direction



- 1 Insert the M.2 SSD into the M Key connector.
- 2 Use your fingertips to poke the SSDs fixed silicone pin in the direction of the diagram.
- 3 Insert the M.2 SSDs and press it to level and secure it with the SSD fixed silicone pin.

Thermal pad



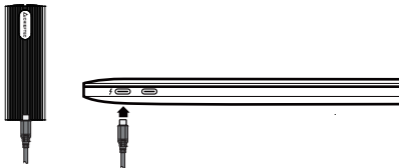
3. 1 Paste the thermal pad on the M.2 SSD (as shown).
- 2 For example, if a 2242-size M.2 SSD is installed (as shown)



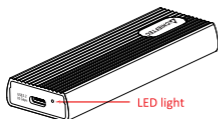
4. Install the tray into the enclosure.(as shown).

Connection and operating

Connect the External NVME SSD on your device.



LED Indicators



- 1.Power LED : Solid Blue for power on.
- 2.Activity LED : Flashing Blue LED for activity.

Running windows Guide

Please read running windows guide on our website.





IN THIS YOU CAN TRUST!